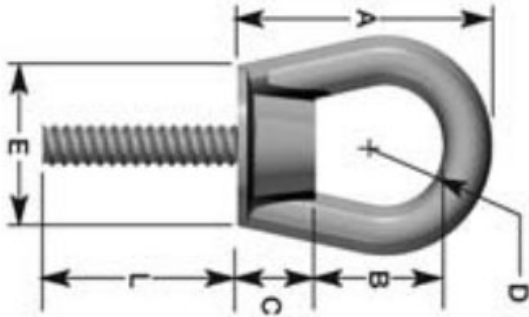


Coil Eye Bolts

Description:

OCM Coil Eye Bolts are cast from ductile iron that meets ASTM Standard A-536 Grade 80-55-06. The Coil Eye Bolt is simply a Coil Eye Nut, with a pre-sized piece of Coil Rod welded into it. These Coil Eye Bolts are designed to only be used in straight tensile loading only. Pulling or Lifting at an angle will result in greatly reduced Safe Working Loads and is not recommended.



Features:

- Can be used with preset Coil Thread Inserts to left and move concrete pieces
- Can be made into any length bolt by using cut pieces of Coil Rod, must be done by certified welder
- Made from Ductile Iron

Additional Notes: SWL provides a safety factor of approximately 2 to 1.

Item Number	Safe Working Load (lbs)	A (in)	B (in)	C (in)	D (in)	E (in)	Bolt Dia. (in)
50CEB	2,700	3 1/4	1 5/8	1	3/4	2	1/2"
75CEB	3,600	3 1/2	1 3/4	1	3/4	2	3/4"
100CEB	7,200	5	2 3/4	1 1/4	1	3	1"